

Name \_\_\_\_\_

SAT Prep Homework

Date \_\_\_\_\_

Write your answers on this sheet. Only turn this sheet in. Do not turn in a copy of the test.

Reading & Writing Module 1

Reading & Writing Module 2: Lower Difficulty

- 1.
- 2.
- 3.
- 4.
- 5.
- 6.
- 7.
- 8.
- 9.
- 10.
- 11.
- 12.
- 13.
- 14.
- 15.
- 16.
- 17.
- 18.
- 19.
- 20.
- 21.
- 22.
- 23.
- 24.
- 25.
- 26.
- 27.

- 1.
- 2.
- 3.
- 4.
- 5.
- 6.
- 7.
- 8.
- 9.
- 10.
- 11.
- 12.
- 13.
- 14.
- 15.
- 16.
- 17.
- 18.
- 19.
- 20.
- 21.
- 22.
- 23.
- 24.
- 25.
- 26.
- 27.

# Reading and Writing

## 27 QUESTIONS

### DIRECTIONS

The questions in this section address a number of important reading and writing skills. Each question includes one or more passages, which may include a table or graph. Read each passage and question carefully, and then choose the best answer to the question based on the passage(s).

All questions in this section are multiple-choice with four answer choices. Each question has a single best answer.

1

In the early 1800s, the Cherokee scholar Sequoyah created the first script, or writing system, for an Indigenous language in the United States. Because it represented the sounds of spoken Cherokee so accurately, his script was easy to learn and thus quickly achieved \_\_\_\_\_ use: by 1830, over 90 percent of the Cherokee people could read and write it.

Which choice completes the text with the most logical and precise word or phrase?

- A) widespread
- B) careful
- C) unintended
- D) infrequent

2

Due to their often strange images, highly experimental syntax, and opaque subject matter, many of John Ashbery's poems can be quite difficult to \_\_\_\_\_ and thus are the object of heated debate among scholars.

Which choice completes the text with the most logical and precise word or phrase?

- A) delegate
- B) compose
- C) interpret
- D) renounce

3

Beginning in the 1950s, Navajo Nation legislator Annie Dodge Wauneka continuously worked to promote public health; this \_\_\_\_\_ effort involved traveling throughout the vast Navajo homeland and writing a medical dictionary for speakers of *Diné bizaad*, the Navajo language.

Which choice completes the text with the most logical and precise word or phrase?

- A) impartial
- B) offhand
- C) persistent
- D) mandatory

4

Kelp forests grow underwater along the eastern Pacific Coast. These underwater forests are important to fish and other marine animals. Ocean currents can be powerful and rough, making it difficult for animals to find safe places to hide from predators. The underwater forests slow down the currents. This creates a more \_\_\_\_\_ environment with calmer waters where animals can take shelter.

Which choice completes the text with the most logical and precise word or phrase?

- A) tranquil
- B) dangerous
- C) imaginative
- D) surprising

5

People sometimes dismiss a claim if it comes from a source they regard as self-interested, but from a strictly logical perspective, the source of a claim is \_\_\_\_\_: it has no direct bearing on whether the claim is true.

Which choice completes the text with the most logical and precise word or phrase?

- A) indistinct
- B) irrelevant
- C) indisputable
- D) implicit

6

Jazz tap is a dance form that was first developed in African American communities. Jazz tap was heavily influenced by jazz music, which became widely popular in the United States in the 1920s. Tap dancers were inspired by jazz music's quick rhythms and by the way jazz musicians would make up melodies as they played. As jazz music continued to develop in the 1930s and 1940s, jazz tap evolved with it. Because of jazz music's influence, jazz tap quickly developed into a dance form that was very different from earlier kinds of tap dance.

Which choice best states the main purpose of the text?

- A) It explains why audiences prefer some kinds of music over others.
- B) It discusses the development of a dance form.
- C) It describes how to play a musical instrument.
- D) It emphasizes the popularity of a famous dancer.

7

The following text is adapted from Jane Austen's 1814 novel *Mansfield Park*. The speaker, Tom, is considering staging a play at home with a group of his friends and family.

We mean nothing but a little amusement among ourselves, just to vary the scene, and exercise our powers in something new. We want no audience, no publicity. We may be trusted, I think, in choosing some play most perfectly unexceptionable; and I can conceive no greater harm or danger to any of us in conversing in the elegant written language of some respectable author than in chattering in words of our own.

Which choice best states the main purpose of the text?

- A) To offer Tom's assurance that the play will be inoffensive and involve only a small number of people
- B) To clarify that the play will not be performed in the manner Tom had originally intended
- C) To elaborate on the idea that the people around Tom lack the skills to successfully stage a play
- D) To assert that Tom believes the group performing the play will be able to successfully promote it

8

**Text 1**

French Impressionist artist Edgar Degas insisted that his paintings be kept in their original frames after they were sold. Like many Impressionist painters, Degas used painted frames that stood in contrast to the gold frames frequently seen at the Paris Salon, a prestigious art exhibition that was sponsored by the French government and promoted traditional painting styles. Impressionist painters likely chose these colorful frames to distinguish themselves from what was considered conventional at the time.

**Text 2**

Impressionist painters often focused on the interplay of color and light in their works. As such, those Impressionists who placed their works in painted frames instead of the more traditional gold ones did so for aesthetic reasons: a frame's color was likely chosen because it would harmonize with the colors or subjects in a painting. Gold, conversely, could distract from the subtleties in a painted scene.

Based on the texts, both authors would most likely agree with which statement?

- A) Gold frames were considered especially desirable by those who purchased works from Impressionist painters.
- B) The colors in an Impressionist painting were often chosen to complement the colors of the frame it would be placed in.
- C) Many Impressionist painters were intentional about the frames they selected for their works.
- D) Degas's preferred framing style was different from that of most Impressionist painters.

9

Choctaw/Cherokee artist Jeffrey Gibson turns punching bags used by boxers into art by decorating them with beadwork and elements of Native dressmaking. These elements include leather fringe and jingles, the metal cones that cover the dresses worn in the jingle dance, a women's dance of the Ojibwe people. Thus, Gibson combines an object commonly associated with masculinity (a punching bag) with art forms traditionally practiced by women in most Native communities (beadwork and dressmaking). In this way, he rejects the division of male and female gender roles.

Which choice best describes Gibson's approach to art, as presented in the text?

- A) He draws from traditional Native art forms to create his original works.
- B) He has been influenced by Native and non-Native artists equally.
- C) He finds inspiration from boxing in designing the dresses he makes.
- D) He rejects expectations about color and pattern when incorporating beadwork.

10

Believing that living in an impractical space can heighten awareness and even improve health, conceptual artists Madeline Gins and Shusaku Arakawa designed an apartment building in Japan to be more fanciful than functional. A kitchen counter is chest-high on one side and knee-high on the other; a ceiling has a door to nowhere. The effect is disorienting but invigorating; after four years there, filmmaker Nobu Yamaoka reported significant health benefits.

Which choice best states the main idea of the text?

- A) Although inhabiting a home surrounded by fanciful features such as those designed by Gins and Arakawa can be rejuvenating, it is unsustainable.
- B) Designing disorienting spaces like those in the Gins and Arakawa building is the most effective way to create a physically stimulating environment.
- C) As a filmmaker, Yamaoka has long supported the designs of conceptual artists such as Gins and Arakawa.
- D) Although impractical, the design of the apartment building by Gins and Arakawa may improve the well-being of the building's residents.

11

Many insects are iridescent, or have colors that appear to shimmer and change when seen from different angles. Scientists have assumed that this feature helps to attract mates but could also attract predators. But biologist Karin Kjærnsmo and a team had the idea that the shifting appearance of colors might actually make it harder for other animals to see iridescent insects. To test this idea, the team put beetle forewings on leaves along a forest path and then asked human participants to look for them. Some of the wings were naturally iridescent. Others were painted with a nonchanging color from the iridescent spectrum, such as purple or blue.

Which finding, if true, would most directly support the team's idea?

- A) On average, participants found most of the purple wings and blue wings and far fewer of the iridescent wings.
- B) On average, participants found the iridescent wings faster than they found the purple wings or blue wings.
- C) Some participants reported that the purple wings were easier to see than the blue wings.
- D) Some participants successfully found all of the wings on the leaves.

12

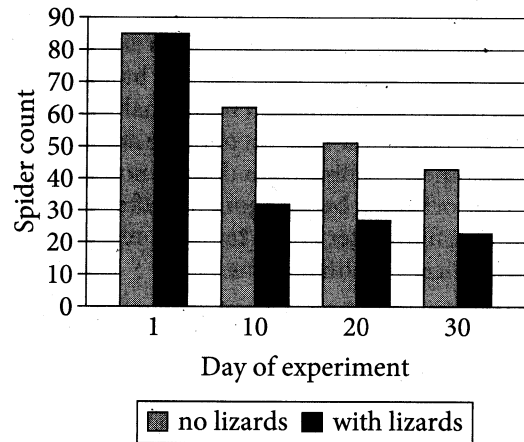
*The Post Office* is a 1912 play by Rabindranath Tagore, originally written in Bengali. The character Amal is a young boy who imagines that the people he sees passing the window of his home are carefree even when engaged in work or chores, as is evident when he says to the daughter of a flower seller, \_\_\_\_\_

Which quotation from *The Post Office* most effectively illustrates the claim?

- A) "I see, you don't wish to stop; I don't care to stay on here either."
- B) "Oh, flower gathering? That is why your feet seem so glad and your anklets jingle so merrily as you walk."
- C) "I'll pay when I grow up—before I leave to look for work out on the other side of that stream there."
- D) "Wish I could be out too. Then I would pick some flowers for you from the very topmost branches right out of sight."

13

Spider Population Count



To investigate the effect of lizard predation on spider populations, a student in a biology class placed spiders in two enclosures, one with lizards and one without, and tracked the number of spiders in the enclosures for 30 days. The student concluded that the reduction in the spider population count in the enclosure with lizards by day 30 was entirely attributable to the presence of the lizards.

Which choice best describes data from the graph that weaken the student's conclusion?

- A) The spider population count was the same in both enclosures on day 1.
- B) The spider population count also substantially declined by day 30 in the enclosure without lizards.
- C) The largest decline in spider population count in the enclosure with lizards occurred from day 1 to day 10.
- D) The spider population count on day 30 was lower in the enclosure with lizards than in the enclosure without lizards.

14

Many mosquito repellents contain natural components that work by activating multiple odor receptors on mosquitoes' antennae. As the insects develop resistance, new repellents are needed. Ke Dong and her team found that EBF, a molecular component of a chrysanthemum-flower extract, can repel mosquitoes by activating just one odor receptor—and this receptor, Or31, is present in all mosquito species known to carry diseases. Therefore, the researchers suggest that in developing new repellents, it would be most useful to \_\_\_\_\_

Which choice most logically completes the text?

- A) identify molecular components similar to EBF that target the activation of Or31 receptors.
- B) investigate alternative methods for extracting EBF molecules from chrysanthemums.
- C) verify the precise locations of Or31 and other odor receptors on mosquitoes' antennae.
- D) determine the maximum number of different odor receptors that can be activated by a single molecule.

15

*Euphorbia esula* (leafy spurge) is a Eurasian plant that has become invasive in North America, where it displaces native vegetation and sickens cattle. *E. esula* can be controlled with chemical herbicides, but that approach can also kill harmless plants nearby. Recent research on introducing engineered DNA into plant species to inhibit their reproduction may offer a path toward exclusively targeting *E. esula*, consequently \_\_\_\_\_

Which choice most logically completes the text?

- A) making individual *E. esula* plants more susceptible to existing chemical herbicides.
- B) enhancing the ecological benefits of *E. esula* in North America.
- C) enabling cattle to consume *E. esula* without becoming sick.
- D) reducing invasive *E. esula* numbers without harming other organisms.

16

While many video game creators strive to make their graphics ever more \_\_\_\_\_ others look to the past, developing titles with visuals inspired by the "8-bit" games of the 1980s and 1990s. (The term "8-bit" refers to a console whose processor could only handle eight bits of data at once.)

Which choice completes the text so that it conforms to the conventions of Standard English?

- A) lifelike but
- B) lifelike
- C) lifelike,
- D) lifelike, but

17

As British scientist Peter Whibberley has observed, "the Earth is not a very good timekeeper." Earth's slightly irregular rotation rate means that measurements of time must be periodically adjusted. Specifically, an extra "leap second" (the 86,401st second of the day) is \_\_\_\_\_ time based on the planet's rotation lags a full nine-tenths of a second behind time kept by precise atomic clocks.

Which choice completes the text so that it conforms to the conventions of Standard English?

- A) added, whenever
- B) added; whenever
- C) added. Whenever
- D) added whenever

18

In Death Valley National Park's Racetrack Playa, a flat, dry lakebed, are 162 rocks—some weighing less than a pound but others almost 700 pounds—that move periodically from place to place, seemingly of their own volition. Racetrack-like trails in the \_\_\_\_\_ mysterious migration.

Which choice completes the text so that it conforms to the conventions of Standard English?

- A) playas sediment mark the rock's
- B) playa's sediment mark the rocks
- C) playa's sediment mark the rocks'
- D) playas' sediment mark the rocks'

19

Along with carbon dioxide concentration and temperature, light intensity affects the chemical reaction rate of \_\_\_\_\_ as light intensity increases, so does the rate at which the reactants (water and carbon dioxide) are converted into their products (glucose and oxygen).

Which choice completes the text so that it conforms to the conventions of Standard English?

- A) photosynthesis and
- B) photosynthesis,
- C) photosynthesis:
- D) photosynthesis

20

Paintings by the renowned twentieth-century US \_\_\_\_\_ were featured in *Artist to Artist*, an exhibition at the Smithsonian Art Museum that paired the works of artists whose career trajectories intersected in meaningful ways.

Which choice completes the text so that it conforms to the conventions of Standard English?

- A) artists: Thomas Hart Benton and Jackson Pollock,
- B) artists Thomas Hart Benton and Jackson Pollock
- C) artists Thomas Hart Benton, and Jackson Pollock,
- D) artists, Thomas Hart Benton and Jackson Pollock

21

In her 2012 analysis of tree rings from Japan's Yaku Island, cosmic ray physicist Fusa Miyake noted an anomalous carbon-14 spike dating to 774–775 CE, indicating that a massive burst of radiation reached Earth during that time. \_\_\_\_\_ this unprecedented radiocarbon surge was dubbed a "Miyake event" in honor of its discoverer.

Which choice completes the text with the most logical transition?

- A) Fittingly,
- B) Similarly,
- C) However,
- D) In other words,

22

One poll taken after the first 1960 presidential debate suggested that John Kennedy lost badly: only 21 percent of those who listened on the radio rated him the winner. \_\_\_\_\_ the debate was ultimately considered a victory for the telegenic young senator, who rated higher than his opponent, Vice President Richard Nixon, among those watching on the new medium of television.

Which choice completes the text with the most logical transition?

- A) In other words,
- B) Therefore,
- C) Likewise,
- D) Nevertheless,



23

In his 1925 book *The Morphology of Landscape*, US geographer Carl Sauer challenged prevailing views about how natural landscapes influence human cultures. \_\_\_\_\_ Sauer argued that instead of being shaped entirely by their natural surroundings, cultures play an active role in their own development by virtue of their interactions with the environment.

Which choice completes the text with the most logical transition?

- A) Similarly,
- B) Finally,
- C) Therefore,
- D) Specifically,

24

While researching a topic, a student has taken the following notes:

- Dr. Sunil Bajpai studies dinosaurs at the Indian Institute of Technology.
- Bajpai's research team recently found a 167-million-year-old dicraeosaurid fossil.
- It is the oldest fossil from the dicraeosaurid dinosaur group ever recovered.
- It was found in the Thar Desert in western India.

The student wants to indicate where the dicraeosaurid fossil was found. Which choice most effectively uses relevant information from the notes to accomplish this goal?

- A) The dicraeosaurid fossil was found in western India's Thar Desert.
- B) Bajpai's team recently found the oldest dicraeosaurid fossil ever recovered.
- C) Dr. Sunil Bajpai, of the Indian Institute of Technology, is part of a research team.
- D) The fossil, which is from the dicraeosaurid dinosaur group, is 167 million years old.

25

While researching a topic, a student has taken the following notes:

- Ancient Native American and Australian Aboriginal cultures described the Pleiades star cluster as having seven stars.
- It was referred to as the Seven Sisters in the mythology of ancient Greece.
- Today, the cluster appears to have only six stars.
- Two of the stars have moved so close together that they now appear as one.

The student wants to specify the reason the Pleiades' appearance changed. Which choice most effectively uses relevant information from the notes to accomplish this goal?

- A) Ancient Native American and Australian Aboriginal cultures described the Pleiades, which was referred to in Greek mythology as the Seven Sisters, as having seven stars.
- B) Although once referred to as the Seven Sisters, the Pleiades appears to have only six stars today.
- C) In the time since ancient cultures described the Pleiades as having seven stars, two of the cluster's stars have moved so close together that they now appear as one.
- D) The Pleiades has seven stars, but two are so close together that they appear to be a single star.

26

While researching a topic, a student has taken the following notes:

- Severo Ochoa discovered the enzyme PNPase in 1955.
- PNPase is involved in both the creation and degradation of mRNA.
- Ochoa incorrectly hypothesized that PNPase provides the genetic blueprints for mRNA.
- The discovery of PNPase proved critical to deciphering the human genetic code.
- Deciphering the genetic code has led to a better understanding of how genetic variations affect human health.

The student wants to emphasize the significance of Ochoa's discovery. Which choice most effectively uses relevant information from the notes to accomplish this goal?

- A) Ochoa's 1955 discovery of PNPase proved critical to deciphering the human genetic code, leading to a better understanding of how genetic variations affect human health.
- B) Ochoa first discovered PNPase, an enzyme that he hypothesized contained the genetic blueprints for mRNA, in 1955.
- C) In 1955, Ochoa discovered the PNPase enzyme, which is involved in both the creation and degradation of mRNA.
- D) Though his discovery of PNPase was critical to deciphering the human genetic code, Ochoa incorrectly hypothesized that the enzyme was the source of mRNA's genetic blueprints.

27

While researching a topic, a student has taken the following notes:

- In the late 1890s, over 14,000 unique varieties of apples were grown in the US.
- The rise of industrial agriculture in the mid-1900s narrowed the range of commercially grown crops.
- Thousands of apple varieties considered less suitable for commercial growth were lost.
- Today, only 15 apple varieties dominate the market, making up 90% of apples purchased in the US.
- The Lost Apple Project, based in Washington State, attempts to find and grow lost apple varieties.

The student wants to emphasize the decline in unique apple varieties in the US and specify why this decline occurred. Which choice most effectively uses relevant information from the notes to accomplish these goals?

- A) The Lost Apple Project is dedicated to finding some of the apple varieties lost following a shift in agricultural practices in the mid-1900s.
- B) While over 14,000 apple varieties were grown in the US in the late 1890s, only 15 unique varieties make up most of the apples sold today.
- C) Since the rise of industrial agriculture, US farmers have mainly grown the same few unique apple varieties, resulting in the loss of thousands of varieties less suitable for commercial growth.
- D) As industrial agriculture rose to prominence in the mid-1900s, the number of crops selected for cultivation decreased dramatically.

**STOP**

**If you finish before time is called, you may check your work on this module only.  
Do not turn to any other module in the test.**

# Reading and Writing

## 27 QUESTIONS

### DIRECTIONS

The questions in this section address a number of important reading and writing skills. Each question includes one or more passages, which may include a table or graph. Read each passage and question carefully, and then choose the best answer to the question based on the passage(s).

All questions in this section are multiple-choice with four answer choices. Each question has a single best answer.

1

The general store was essential to daily life in the rural United States during the 1800s because it provided the supplies that the people living in nearby communities needed. Also, the store was a \_\_\_\_\_ of information. People socializing at the general store would share news and help spread it throughout their communities.

Which choice completes the text with the most logical and precise word or phrase?

- A) source
- B) rival
- C) condition
- D) waste

2

According to Potawatomi ecologist Robin Wall Kimmerer, the Indigenous method of harvesting *Hierochloe odorata*, or sweetgrass, by snapping the plant off at the root actually \_\_\_\_\_ wild populations: it may seem counterintuitive, she says, but this method of removal allows new sweetgrass plants to repopulate the space, with an overall increase in number and vigor.

Which choice completes the text with the most logical and precise word or phrase?

- A) selects
- B) originates
- C) conditions
- D) replenishes

3

The process of mechanically recycling plastics is often considered \_\_\_\_\_ because of the environmental impact and the loss of material quality that often occurs. But chemist Takunda Chazovachii has helped develop a cleaner process of chemical recycling that converts superabsorbent polymers from diapers into a desirable reusable adhesive.

Which choice completes the text with the most logical and precise word or phrase?

- A) resilient
- B) inadequate
- C) dynamic
- D) satisfactory

4

The parasitic dodder plant increases its reproductive success by flowering at the same time as the host plant it has latched onto. In 2020, Jianqiang Wu and his colleagues determined that the tiny dodder achieves this \_\_\_\_\_ with its host by absorbing and utilizing a protein the host produces when it is about to flower.

Which choice completes the text with the most logical and precise word or phrase?

- A) synchronization
- B) hibernation
- C) prediction
- D) moderation

5

The following text is adapted from Pam Muñoz Ryan's 2020 novel *Mañanaland*. In the village where Max lives, there is an old fortress called La Reina. Children in the village say that the fortress is haunted.

For as long as he could remember, Max had begged Papá [his father] to take him to see La Reina and the ruins up close. He'd be a hero among his friends if he was the first boy to cross the haunted gates! Just because Papá didn't believe in ghosts didn't mean they weren't there. Maybe this summer Papá would finally take him. He *was* almost twelve.

©2020 by Pam Muñoz Ryan

Which choice best describes the overall purpose of the text?

- A) To portray how proud Max's father is of Max
- B) To explain why Max doesn't want to grow up yet
- C) To criticize Max for disliking summer
- D) To show how much Max wants to visit La Reina

6

The following text is adapted from Gwendolyn Bennett's 1926 poem "Street Lamps in Early Spring."

Night wears a garment  
All velvet soft, all violet blue...  
And over her face she draws a veil  
As shimmering fine as floating dew...  
And here and there  
In the black of her hair  
The subtle hands of Night  
Move slowly with their gem-starred light.

Which choice best describes the overall structure of the text?

- A) It presents alternating descriptions of night in a rural area and in a city.
- B) It sketches an image of nightfall, then an image of sunrise.
- C) It makes an extended comparison of night to a human being.
- D) It portrays how night changes from one season of the year to the next.

7

The following text is adapted from Sylvia Acevedo's 2018 memoir *Path to the Stars: My Journey from Girl Scout to Rocket Scientist*. The narrator is traveling by car with her family to Mexico City. Mario and Laura are her brother and sister.

Mario and I played games to see how many different license plates we could spot, and Laura liked to look for children in the back seats of the cars we passed. We were used to the forty-five-minute drive to El Paso and familiar with the six-hour ride to Chihuahua, but I wondered what the long journey to Mexico City would be like.

©2018 by Sylvia Acevedo

According to the text, what did the narrator and Mario do while riding in the car?

- A) They read books.
- B) They sang songs.
- C) They went to sleep.
- D) They played games.

8

In the 1960s, Gloria Richardson led a movement to promote racial equality. Her involvement in this effort was inspired by her daughter, Donna Richardson. In 1961, Donna joined protests organized by the Student Nonviolent Coordinating Committee in Cambridge, Maryland. Following her daughter, Gloria joined these protests too. Gloria soon became the cochair of the Cambridge Nonviolent Action Committee. She was also the leader of what became known as the Cambridge movement.

According to the text, what did Gloria Richardson lead?

- A) The Cambridge movement
- B) Her daughter Donna's high school
- C) Protests to support environmental protections
- D) A new business in Cambridge, Maryland

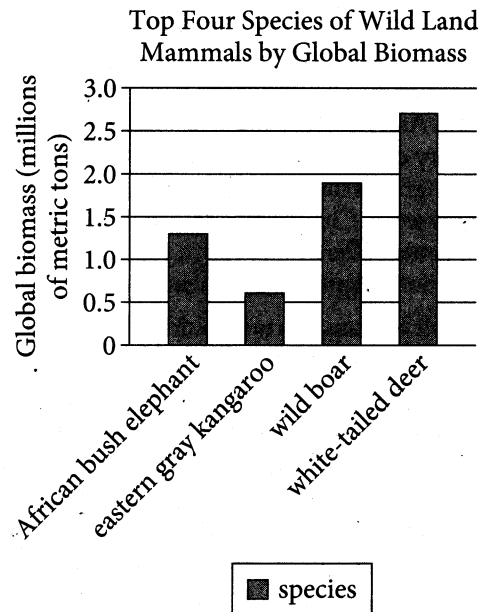
9

Archaeologist Petra Vaiglova, anthropologist Xinyi Liu, and their colleagues investigated the domestication of farm animals in China during the Bronze Age (approximately 2000 to 1000 BCE). By analyzing the chemical composition of the bones of sheep, goats, and cattle from this era, the team determined that wild plants made up the bulk of sheep's and goats' diets, while the cattle's diet consisted largely of millet, a crop cultivated by humans. The team concluded that cattle were likely raised closer to human settlements, whereas sheep and goats were allowed to roam farther away.

Which finding, if true, would most strongly support the team's conclusion?

- A) Analysis of the animal bones showed that the cattle's diet also consisted of wheat, which humans widely cultivated in China during the Bronze Age.
- B) Further investigation of sheep and goat bones revealed that their diets consisted of small portions of millet as well.
- C) Cattle's diets generally require larger amounts of food and a greater variety of nutrients than do sheep's and goats' diets.
- D) The diets of sheep, goats, and cattle were found to vary based on what the farmers in each Bronze Age settlement could grow.

10



Global biomass is the total mass of living material, such as animals and plants, on Earth. A team of scientists estimated the global biomass, by species, of various wild land mammals. The team found that the species with the highest global biomass is the \_\_\_\_\_.

Which choice most effectively uses data from the graph to complete the sentence?

- A) wild boar.
- B) eastern gray kangaroo.
- C) African bush elephant.
- D) white-tailed deer.

11

Housing Starts in the US,  
January–April 2022 (in thousands)

Month	Housing starts
January	1,669
February	1,771
March	1,713
April	1,803

When construction of a single-family house begins, it is called a housing start. In the first four months of 2022, the highest number of housing starts in the United States was in \_\_\_\_\_.

Which choice most effectively uses data from the table to complete the statement?

- A) April.
- B) March.
- C) January.
- D) February.

12

Approximate Rates of Speech and Information Conveyed for Five Languages

Language	Rate of speech (syllables per second)	Rate of information conveyed (bits per second)
Serbian	7.2	39.1
Spanish	7.7	42.0
Vietnamese	5.3	42.5
Thai	4.7	33.8
Hungarian	5.9	34.6

A group of researchers working in Europe, Asia, and Oceania conducted a study to determine how quickly different Eurasian languages are typically spoken (in syllables per second) and how much information they can effectively convey (in bits per second). They found that, although languages vary widely in the speed at which they are spoken, the amount of information languages can effectively convey tends to vary much less. Thus, they claim that two languages with very different spoken rates can nonetheless convey the same amount of information in a given amount of time.

Which choice best describes data from the table that support the researchers' claim?

- A) Among the five languages in the table, Thai and Hungarian have the lowest rates of speech and the lowest rates of information conveyed.
- B) Vietnamese conveys information at approximately the same rate as Spanish despite being spoken at a slower rate.
- C) Among the five languages in the table, the language that is spoken the fastest is also the language that conveys information the fastest.
- D) Serbian and Spanish are spoken at approximately the same rate, but Serbian conveys information faster than Spanish does.

13

Born in 1891 to a Quechua-speaking family in the Andes Mountains of Peru, Martín Chambi is today considered to be one of the most renowned figures of Latin American photography. In a paper for an art history class, a student claims that Chambi's photographs have considerable ethnographic value—in his work, Chambi was able to capture diverse elements of Peruvian society, representing his subjects with both dignity and authenticity.

Which finding, if true, would most directly support the student's claim?

- A) Chambi took many commissioned portraits of wealthy Peruvians, but he also produced hundreds of images carefully documenting the peoples, sites, and customs of Indigenous communities of the Andes.
- B) Chambi's photographs demonstrate a high level of technical skill, as seen in his strategic use of illumination to create dramatic light and shadow contrasts.
- C) During his lifetime, Chambi was known and celebrated both within and outside his native Peru, as his work was published in places like Argentina, Spain, and Mexico.
- D) Some of the peoples and places Chambi photographed had long been popular subjects for Peruvian photographers.

14

Although military veterans make up a small proportion of the total population of the United States, they occupy a significantly higher proportion of the jobs in the civilian government. One possible explanation for this disproportionate representation is that military service familiarizes people with certain organizational structures that are also reflected in the civilian government bureaucracy, and this familiarity thus \_\_\_\_\_

Which choice most logically completes the text?

- A) makes civilian government jobs especially appealing to military veterans.
- B) alters the typical relationship between military service and subsequent career preferences.
- C) encourages nonveterans applying for civilian government jobs to consider military service instead.
- D) increases the number of civilian government jobs that require some amount of military experience to perform.

15

British scientists James Watson and Francis Crick won the Nobel Prize in part for their 1953 paper announcing the double helix structure of DNA, but it is misleading to say that Watson and Crick discovered the double helix. \_\_\_\_\_ findings were based on a famous X-ray image of DNA fibers, "Photo 51," developed by X-ray crystallographer Rosalind Franklin and her graduate student Raymond Gosling.

Which choice completes the text so that it conforms to the conventions of Standard English?

- A) They're
- B) It's
- C) Their
- D) Its

16

A member of the Cherokee Nation, Mary Golda Ross is renowned for her contributions to NASA's Planetary Flight Handbook, which \_\_\_\_\_ detailed mathematical guidance for missions to Mars and Venus.

Which choice completes the text so that it conforms to the conventions of Standard English?

- A) provided
- B) having provided
- C) to provide
- D) providing

17

In order to prevent nonnative fish species from moving freely between the Mediterranean and Red Seas, marine biologist Bella Galil has proposed that a saline lock system be installed along the Suez Canal in Egypt's Great Bitter Lakes. The lock would increase the salinity of the lakes and \_\_\_\_\_ a natural barrier of water most marine creatures would be unable to cross.

Which choice completes the text so that it conforms to the conventions of Standard English?

- A) creates
- B) create
- C) creating
- D) created

18

After the United Kingdom began rolling out taxes equivalent to a few cents on single-use plastic grocery bags in 2011, plastic-bag consumption decreased by up to ninety \_\_\_\_\_ taxes are subject to what economists call the "rebound effect": as the change became normalized, plastic-bag use started to creep back up.

Which choice completes the text so that it conforms to the conventions of Standard English?

- A) percent, such
- B) percent and such
- C) percent. Such
- D) percent such



19

Food and the sensation of taste are central to Monique Truong's novels. In *The Book of Salt*, for example, the exiled character of Binh connects to his native Saigon through the food he prepares, while in *Bitter in the Mouth*, the character of Linda \_\_\_\_\_ a form of synesthesia whereby the words she hears evoke tastes.

Which choice completes the text so that it conforms to the conventions of Standard English?

- A) experienced
- B) had experienced
- C) experiences
- D) will be experiencing

20

In February 1919, following the end of the First World War, women from ten countries around the world convened the Inter-Allied Women's Conference in Paris. The conference's goals were \_\_\_\_\_ ensure women's participation in the proceedings of the Paris Peace Conference, to secure the right of women to serve in the League of Nations, and to advocate for human rights.

Which choice completes the text so that it conforms to the conventions of Standard English?

- A) threefold: to
- B) threefold. To
- C) threefold to
- D) threefold; to

21

Most conifers (trees belonging to the phylum Coniferophyta) are evergreen. That is, they keep their green leaves or needles year-round. However, not all conifer species are evergreen. Larch trees, \_\_\_\_\_ lose their needles every fall.

Which choice completes the text with the most logical transition?

- A) for instance,
- B) nevertheless,
- C) meanwhile,
- D) in addition,

22

Etched into Peru's Nazca Desert are line drawings so large that they can only be fully seen from high above. Archaeologists have known of the lines since the 1920s, when a researcher spotted some from a nearby foothill, and they have been studying the markings ever since. \_\_\_\_\_ archaeologists' efforts are aided by drones that capture high-resolution aerial photographs of the lines.

Which choice completes the text with the most logical transition?

- A) Currently,
- B) In comparison,
- C) Still,
- D) However,

23

Organisms have evolved a number of surprising adaptations to ensure their survival in adverse conditions. Tadpole shrimp (*Triops longicaudatus*) embryos, \_\_\_\_\_ can pause development for over ten years during extended periods of drought.

Which choice completes the text with the most logical transition?

- A) in contrast,
- B) for example,
- C) meanwhile,
- D) consequently,

24

Chimamanda Ngozi Adichie's 2013 novel *Americanah* chronicles the divergent experiences of Ifemelu and Obinze, a young Nigerian couple, after high school. Ifemelu moves to the United States to attend a prestigious university. \_\_\_\_\_ Obinze travels to London, hoping to start a career there. However, frustrated with the lack of opportunities, he soon returns to Nigeria.

Which choice completes the text with the most logical transition?

- A) Meanwhile,
- B) Nevertheless,
- C) Secondly,
- D) In fact,

25

While researching a topic, a student has taken the following notes:

- Little is known about the life of Wong Fei-hung (1847–1925).
- He was born near Foshan, China, and gained local recognition as a physician and Hung Ga (also known as Hung Gar) Kung Fu master.
- He achieved many incredible martial arts feats—some confirmed and some rumored.
- He has become an internationally known folk hero thanks to his depiction in over a hundred films, television shows, and other media.
- In the 1991 film *Once Upon a Time in China*, actor Jet Li portrays Wong Fei-hung using superhuman kung fu abilities to save his community.

The student wants to emphasize the effect media had on building Wong Fei-hung's legacy. Which choice most effectively uses relevant information from the notes to accomplish this goal?

- A) Thanks to his depiction in over a hundred pieces of media, Wong Fei-hung was locally known as a successful physician and Hung Ga Kung Fu master.
- B) Though he was known locally during his lifetime, Wong Fei-hung's later depiction in television, film, and other media has turned him into an internationally known folk hero.
- C) Various media have depicted Wong Fei-hung, the successful physician and kung fu master who became an internationally known folk hero.
- D) Wong Fei-hung's abilities as a kung fu master are depicted in many media, including the 1991 film *Once Upon a Time in China*.

26

While researching a topic, a student has taken the following notes:

- The Seikan Tunnel is a rail tunnel in Japan.
- It connects the island of Honshu to the island of Hokkaido.
- It is roughly 33 miles long.
- The Channel Tunnel is a rail tunnel in Europe.
- It connects Folkestone, England, to Coquelles, France.
- It is about 31 miles long.

The student wants to compare the lengths of the two rail tunnels. Which choice most effectively uses relevant information from the notes to accomplish this goal?

- A) Some of the world's rail tunnels, including one tunnel that extends from Folkestone, England, to Coquelles, France, are longer than 30 miles.
- B) The Seikan Tunnel is roughly 33 miles long, while the slightly shorter Channel Tunnel is about 31 miles long.
- C) The Seikan Tunnel, which is roughly 33 miles long, connects the Japanese islands of Honshu and Hokkaido.
- D) Both the Seikan Tunnel, which is located in Japan, and the Channel Tunnel, which is located in Europe, are examples of rail tunnels.

27

While researching a topic, a student has taken the following notes:

- The Gullah are a group of African Americans who have lived in parts of the southeastern United States since the 18th century.
- Gullah culture is influenced by West African and Central African traditions.
- Louise Miller Cohen is a Gullah historian, storyteller, and preservationist.
- She founded the Gullah Museum of Hilton Head Island, South Carolina, in 2003.
- Vermelle Rodrigues is a Gullah historian, artist, and preservationist.
- She founded the Gullah Museum of Georgetown, South Carolina, in 2003.

The student wants to emphasize the duration and purpose of Cohen's and Rodrigues's work. Which choice most effectively uses relevant information from the notes to accomplish this goal?

- A) At the Gullah Museums in Hilton Head Island and Georgetown, South Carolina, visitors can learn more about the Gullah people who have lived in the region for centuries.
- B) Louise Miller Cohen and Vermelle Rodrigues have worked to preserve the culture of the Gullah people, who have lived in the United States since the 18th century.
- C) Since 2003, Louise Miller Cohen and Vermelle Rodrigues have worked to preserve Gullah culture through their museums.
- D) Influenced by the traditions of West and Central Africa, Gullah culture developed in parts of the southeastern United States in the 18th century.

# STOP

**If you finish before time is called, you may check your work on this module only.  
Do not turn to any other module in the test.**